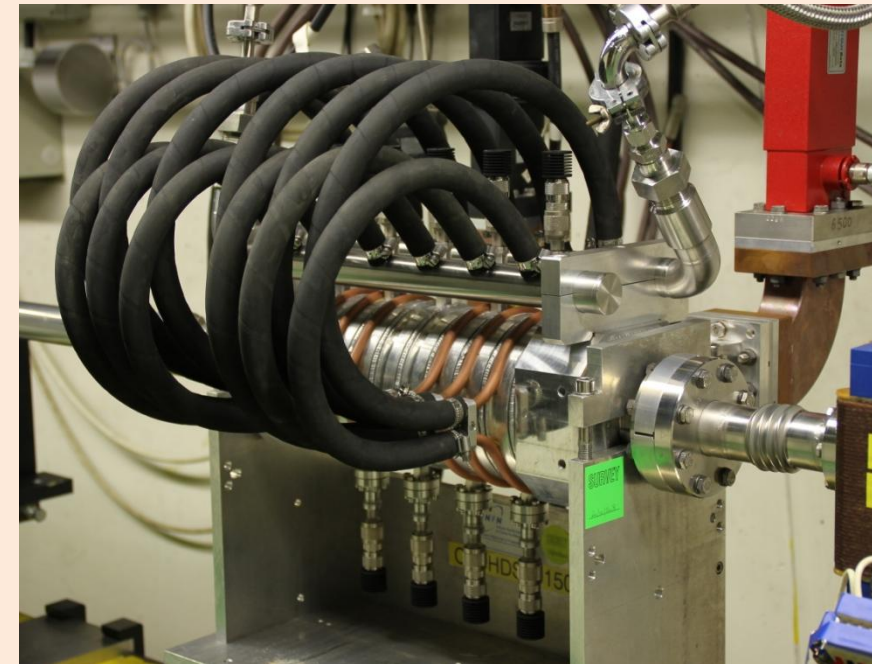
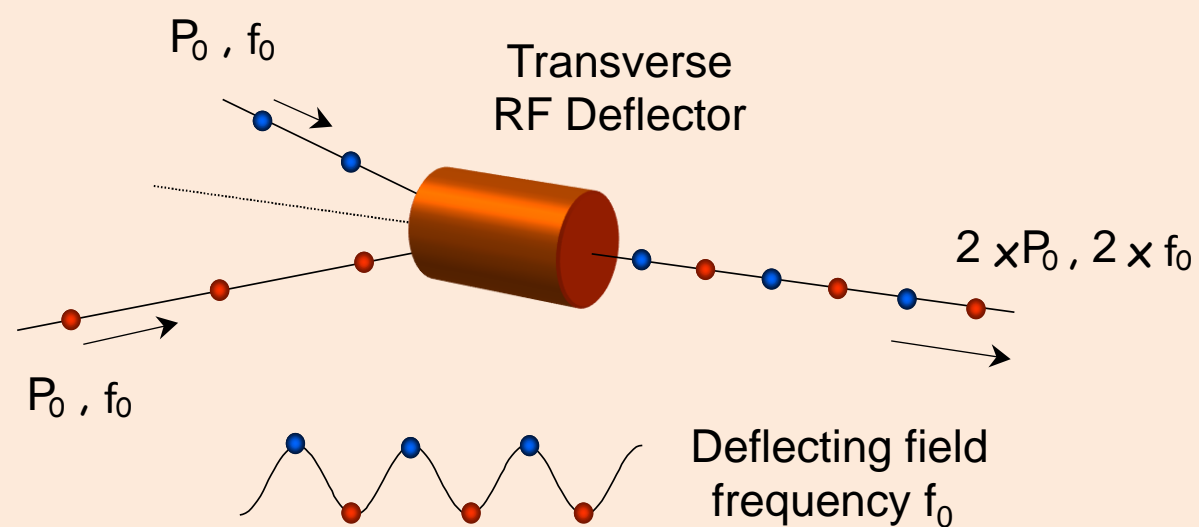


Bunch interleaving

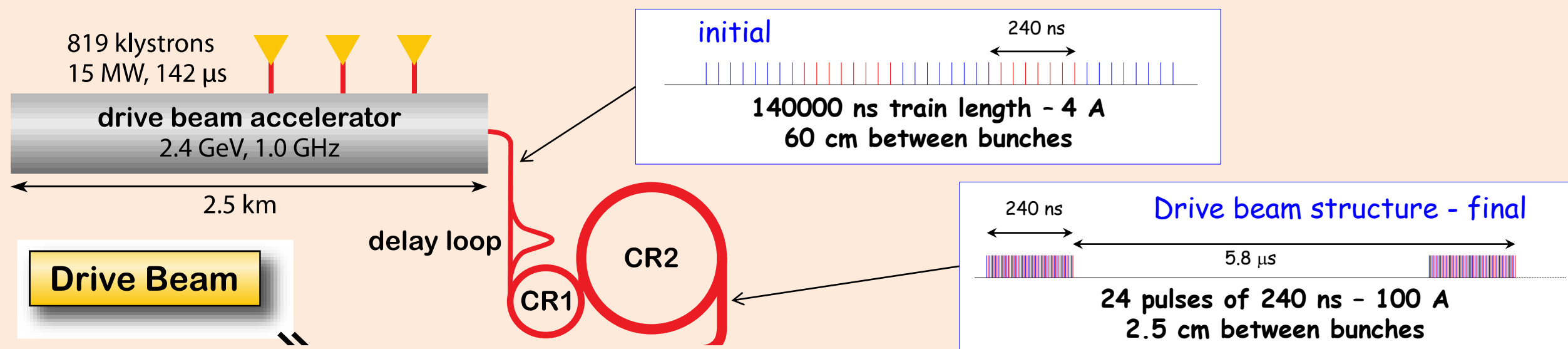
The CLIC Drive Beam is an intense electron beam with 100 A beam current. It is generated by interleaving electron bunches with the help of transversely deflecting RF cavities.



RF deflector

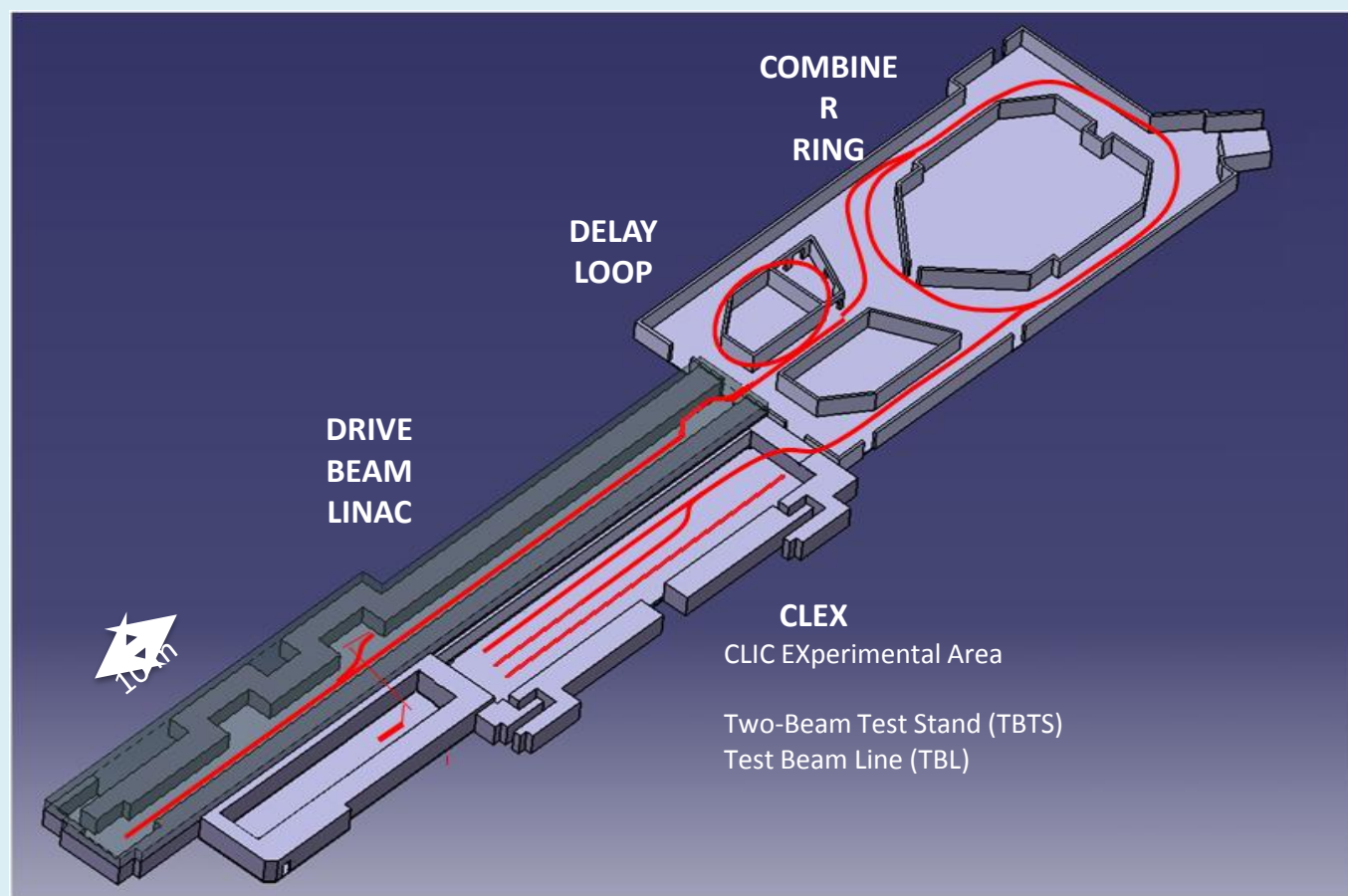
Drive Beam Complex

A long train of bunches is accelerated in the Drive Beam linac. Parts of the train are delayed in the Delay Loop and Combiner Rings and interleaved by the RF deflectors. Like this, a train of 4 A beam current is combined into short trains of 100 A.



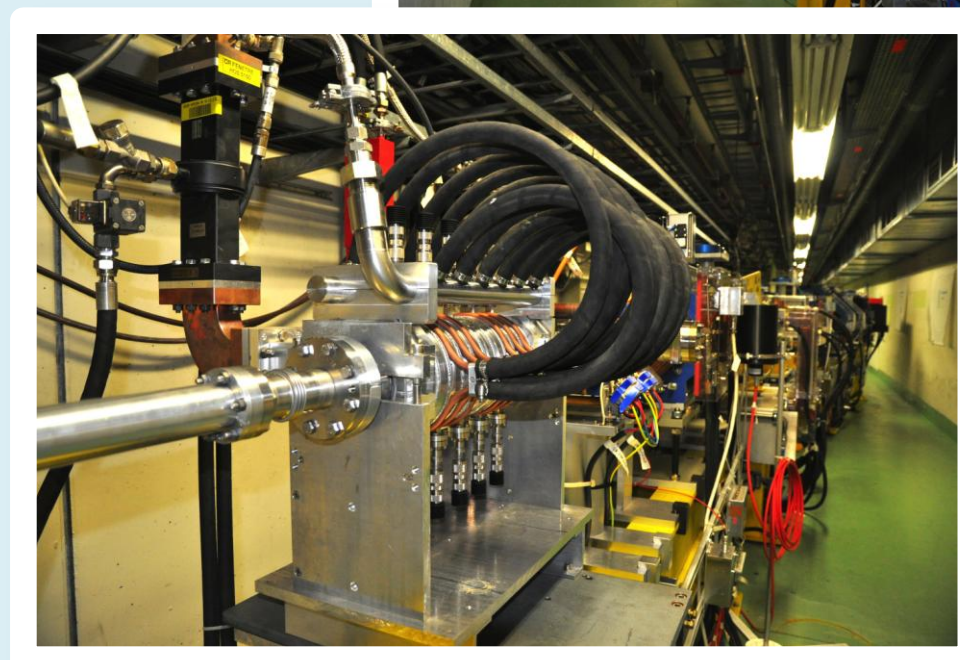
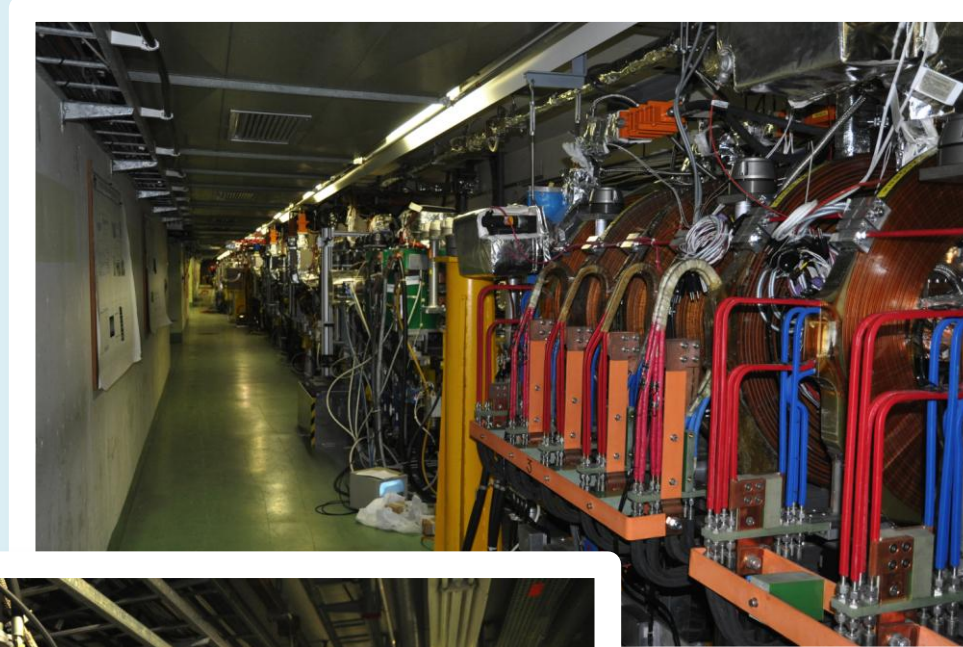
CLIC Test Facility CTF3

The main goal of CTF3 is to demonstrate the CLIC Drive Beam generation.



CTF3 layout

CTF3 Drive Beam Linac



CTF3 Combiner Ring